



## IMPORTANT SAFETY WARNINGS



**THE INSTALLATION MUST ONLY BE PERFORMED BY A LICENSED ELECTRICIAN. TO PREVENT DEATH, INJURY OR DAMAGE TO PROPERTY, THIS PRODUCT MUST BE INSTALLED IN ACCORDANCE TO NATIONAL ELECTRIC CODE (NFPA70) IN THE US OR CANADIAN ELECTRICAL CODE (CSA22.1) IN CANADA.**

*L'INSTALLATION NE DOIT ÊTRE EFFECTUÉE QUE PAR UN ÉLECTRICIEN AGRÉÉ. POUR PRÉVENIR LES DÉCÈS, LES BLESSURES OU LES DOMMAGES MATÉRIELS, CE PRODUIT DOIT ÊTRE INSTALLÉ CONFORMÉMENT AU CODE NATIONAL DE L'ÉLECTRICITÉ (NFPA70) AUX USA OU CODE CANADIEN DE L'ÉLECTRICITÉ (CSA22.1) AU CANADA.*

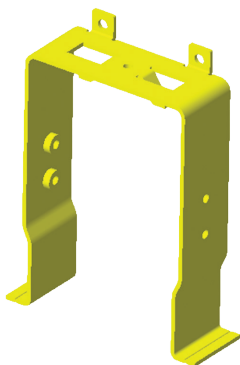
**CONSULT A QUALIFIED ELECTRICIAN TO ENSURE CORRECT BRANCH CIRCUIT CONDUCTOR.**

*CONSULTER UN ÉLECTRICIEN QUALIFIÉ POUR VOUS ASSURER QUE LES CONDUCTEURS DE LA DÉRIVATION SONT ADÉQUATS.*

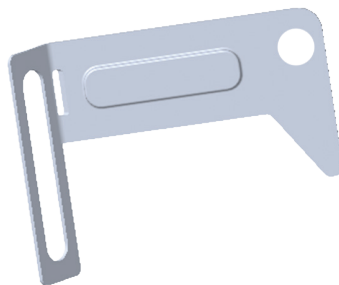
**CAUTION – RISK OF FIRE. MIN 75°C (167°F) SUPPLY CONDUCTORS.**

*ATTENTION – RISQUE D'INCENDIE. LES FILS D'ALIMENTATION 75°C (167°F) MIN.*

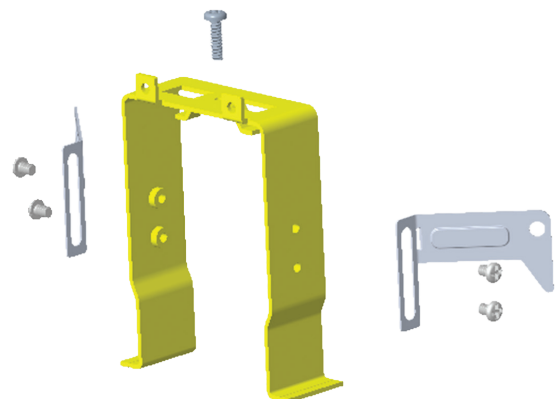
- To reduce the risk of death, personal injury or property damage from fire, electric shock, falling parts, cuts/abrasions, and other hazards please read all warnings and instructions included with the fixture box and labels.
- Follow all manufacturer's warnings and restrictions for: driver type, burning position, mounting locations/methods, replacement and recycling.
- Wear gloves and safety glasses at all times when removing luminaire from carton, installing, servicing or performing maintenance.
- Disconnect or turn off power before installation or servicing the luminaire.
- Allow fixture to cool before handling.
- Do not exceed maximum wattage marked on the label.
- Do not operate in close proximity to persons, combustible materials or substances affected by heat or drying.
- Verify that supply voltage is correct by comparing it with label information.
- Wiring connections should be capped with UL-approved wire connectors.
- DO NOT INSTALL DAMAGED PRODUCT! This luminaire has been properly packed so that no parts should have been damaged during transit. Inspect to confirm. Any part damaged during or after assembly should be replaced.
- Maintenance should be performed by person(s) familiar with the luminaires' construction and operation and any hazards involved. Regular fixture maintenance programs are recommended.
- It will occasionally be necessary to clean the outside of the refractor/lens. Frequency of cleaning will depend on ambient dirt level and minimum light output which is acceptable to user. Refractor/lens should be washed in a solution of warm water and any mild, non-abrasive household detergent, rinsed with clean water and wiped dry.
- Should optical assembly become dirty on the inside, wipe lens and clean in above manner, replacing damaged gaskets as necessary.
- These instructions do not purport to cover all details or variations in equipment nor to provide every possible contingency to meet in connection with installation, operation, or maintenance.



**T-Rail Fixing Bracket**



**Vibration Prevention Clamp**

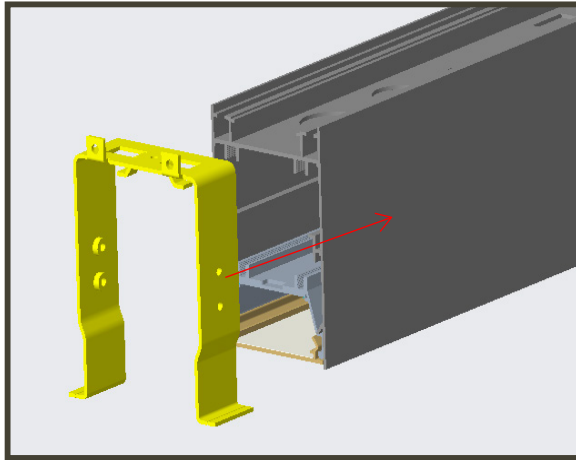


**Complete Set of Components**

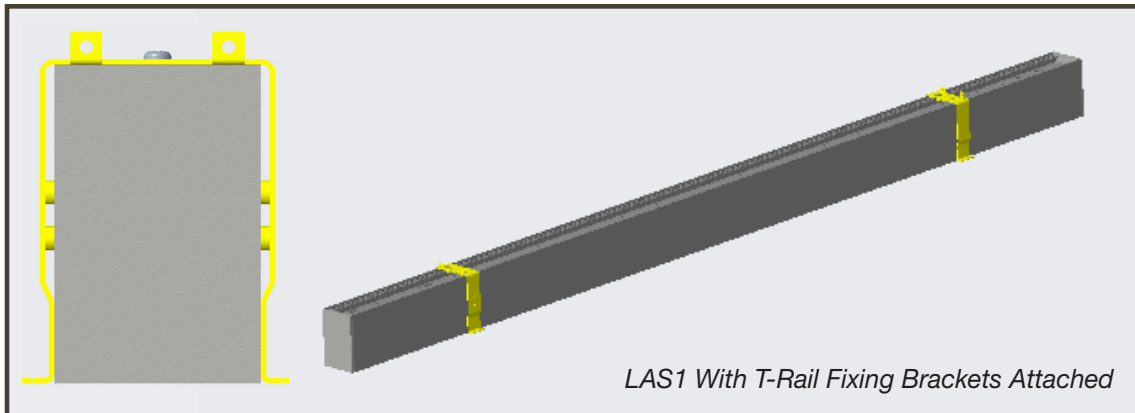
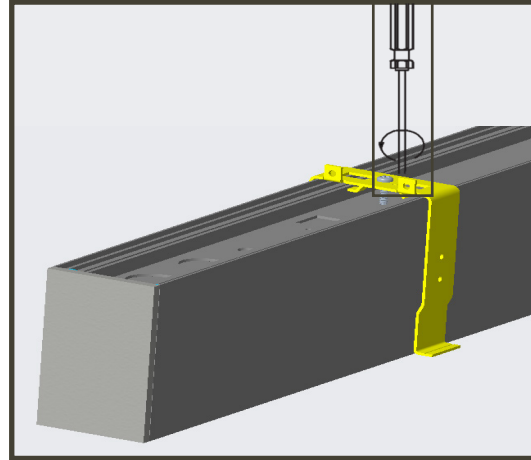
Specifications and dimensions may change without prior notice. Certain components may appear with a color overlay to help clarify installation steps.  
All images are intended for illustration only and may not reflect the exact final product.

### RECESSED BRACKET T-GRID MOUNT INSTALLATION

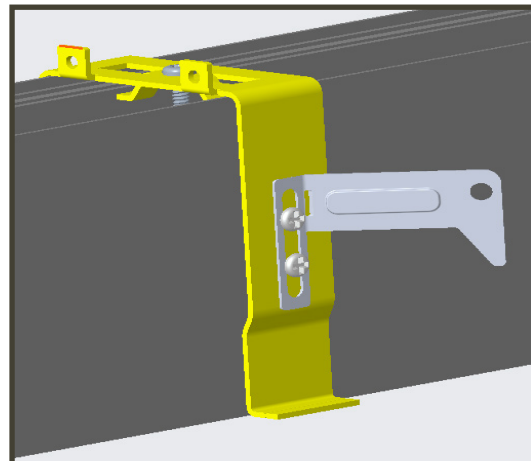
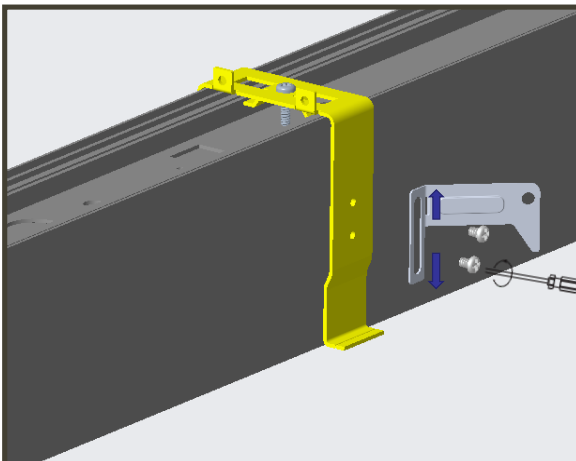
1. Move the T-Rail Fixing Bracket onto the correct location of the LAS1 fixture.



2. Tighten the screws to fasten the T-Rail Fixing Bracket onto the LAS1 fixture.

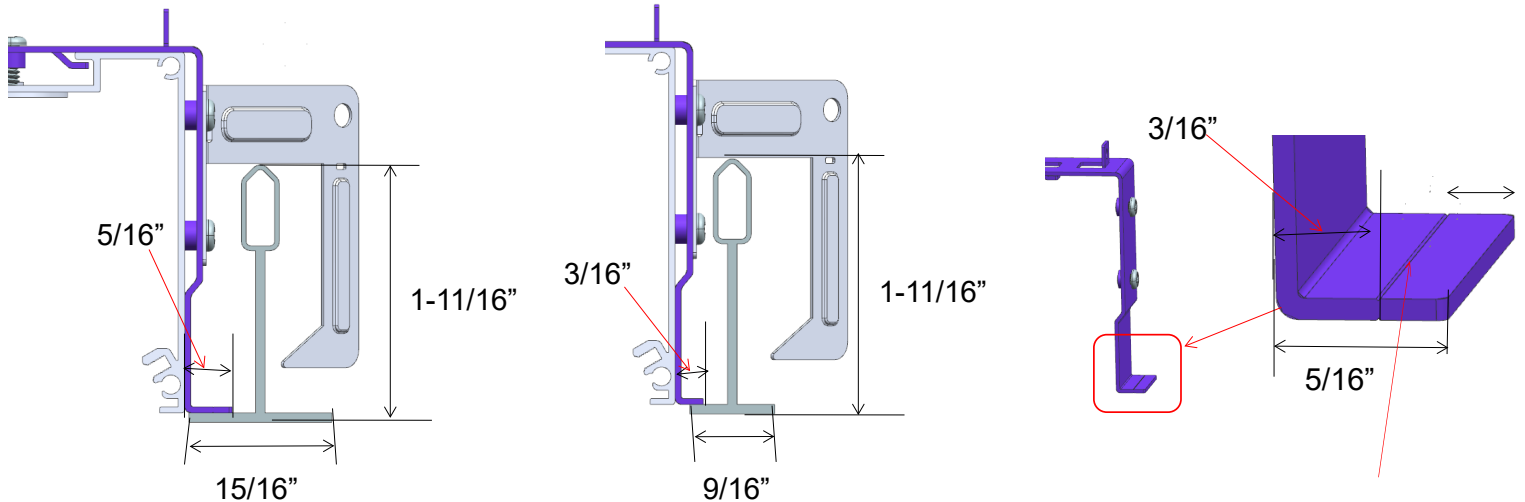


3. Tighten the screws to lock the Vibration Prevention Clamp onto the T-Rail Fixing Bracket.



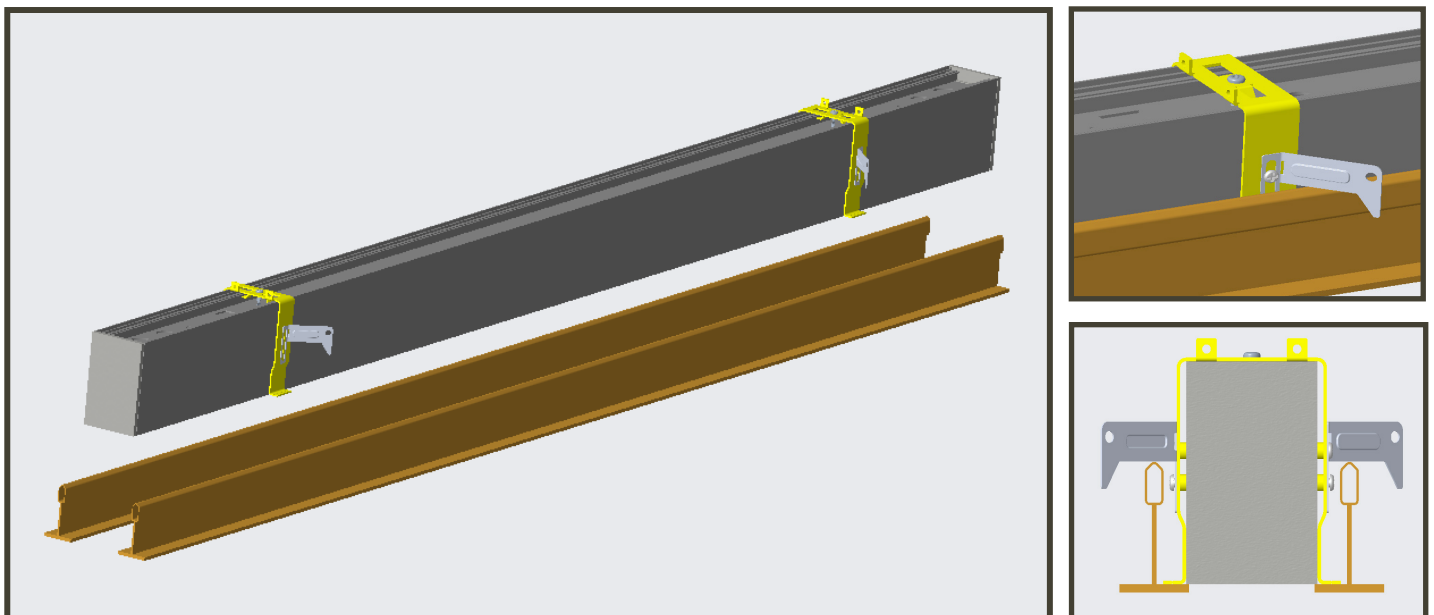
Specifications and dimensions may change without prior notice. Certain components may appear with a color overlay to help clarify installation steps.  
All images are intended for illustration only and may not reflect the exact final product.

### RECESSED BRACKET T-GRID MOUNT INSTALLATION



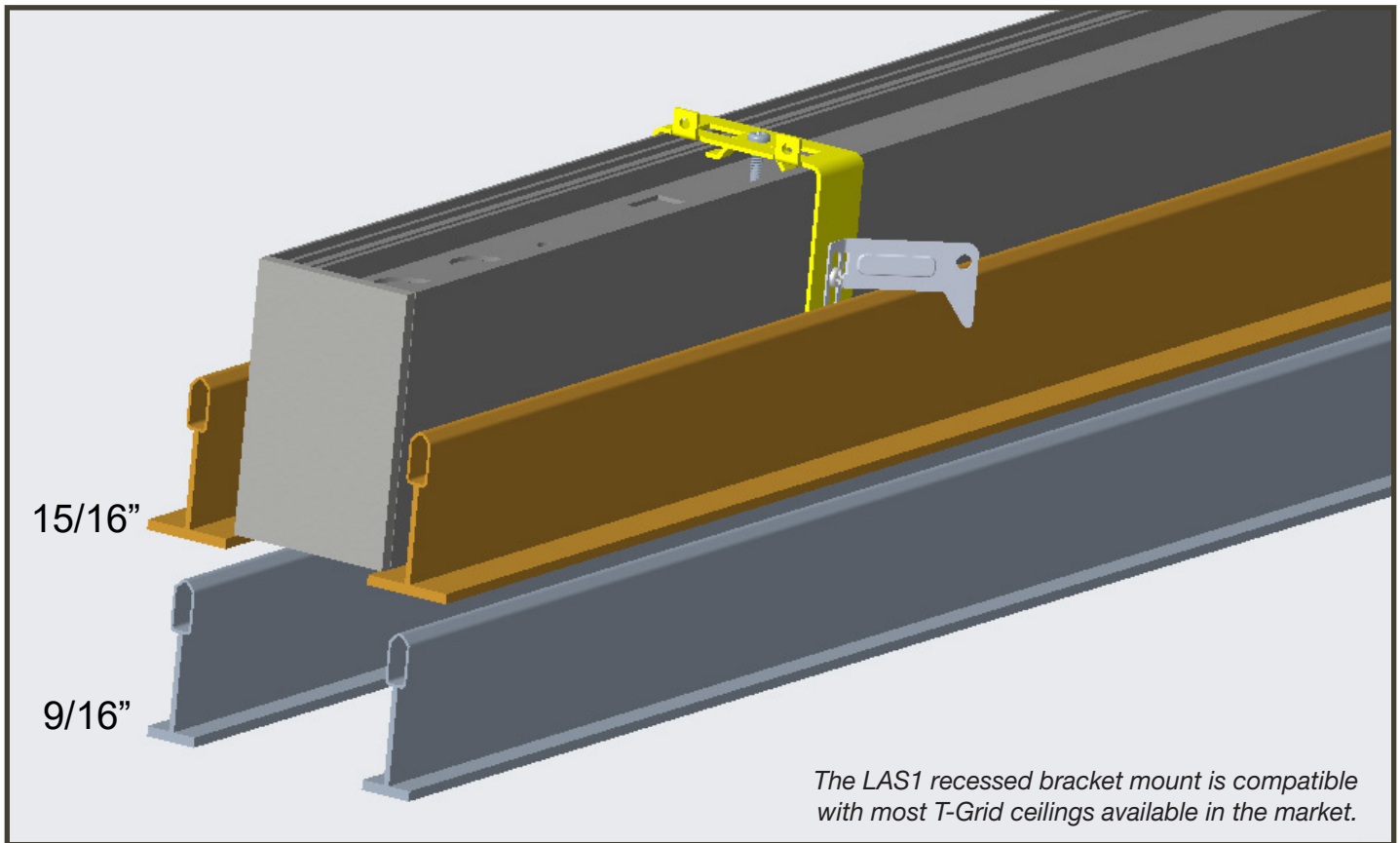
**Note:** There is a slot on this plate. Slot is designed with two widths (3/16\" and 5/16\") to ensure compatibility with both 9/16\" and 15/16\" T-Grid systems.

4. At the T-Grid ceiling, adjust the width between the two bars to the required dimensions. The LAS1, fitted with brackets, is positioned between two keels by rotating the clamp/clip. The LAS1 fixture is then secured to the T-Grid ceiling by rotating the retaining clip over the T-Grid flange.



Specifications and dimensions may change without prior notice. Certain components may appear with a color overlay to help clarify installation steps.  
All images are intended for illustration only and may not reflect the exact final product.

### RECESSED BRACKET T-GRID MOUNT INSTALLATION



**Finishing Note:** Additional T-Rails may be required (by others) to achieve the desired finished appearance.